

HAEMODIALYSIS



Painting by Sarah Brown, *Tjiluru Tjiluru Wiya*, 2007

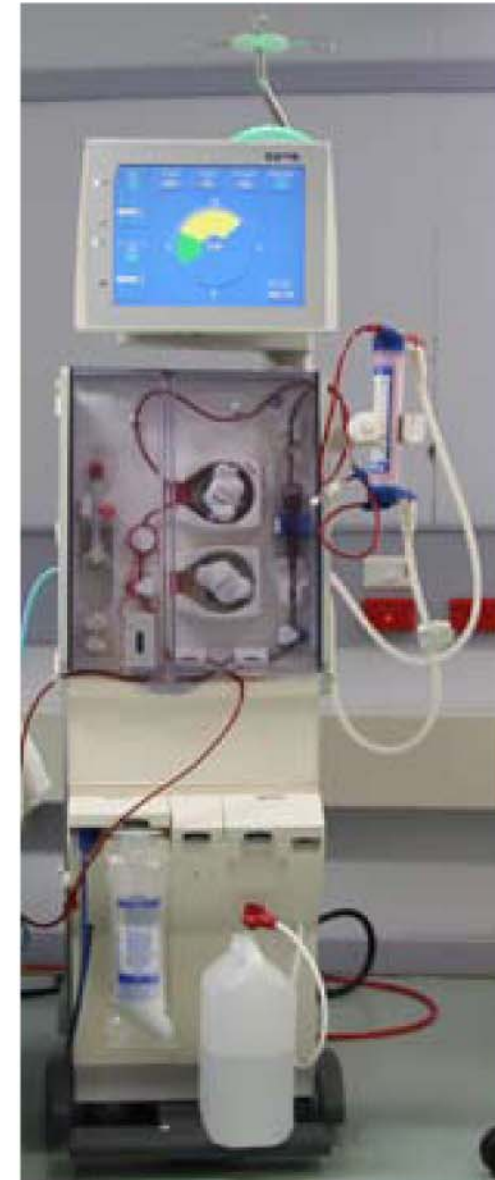
IMPORTANT MESSAGES:

1. You need to talk about the right treatment for you
2. Haemodialysis treatment is three times a week for ever
3. Most people have to move to a town to do haemodialysis
4. You need a fistula for haemodialysis
5. Your life will change a lot
6. Haemodialysis does not fix kidneys
7. The medical team, social workers and Aboriginal Liaison Officers can help you sort things out before you start haemodialysis

TOPICS:

- Picking the right treatment
- What is haemodialysis
- Access for haemodialysis
- Changing your home; changing your life
- Getting help
- Where patients have haemodialysis
- When patients have haemodialysis

Haemodialysis machines



People having haemodialysis



Getting a fistula



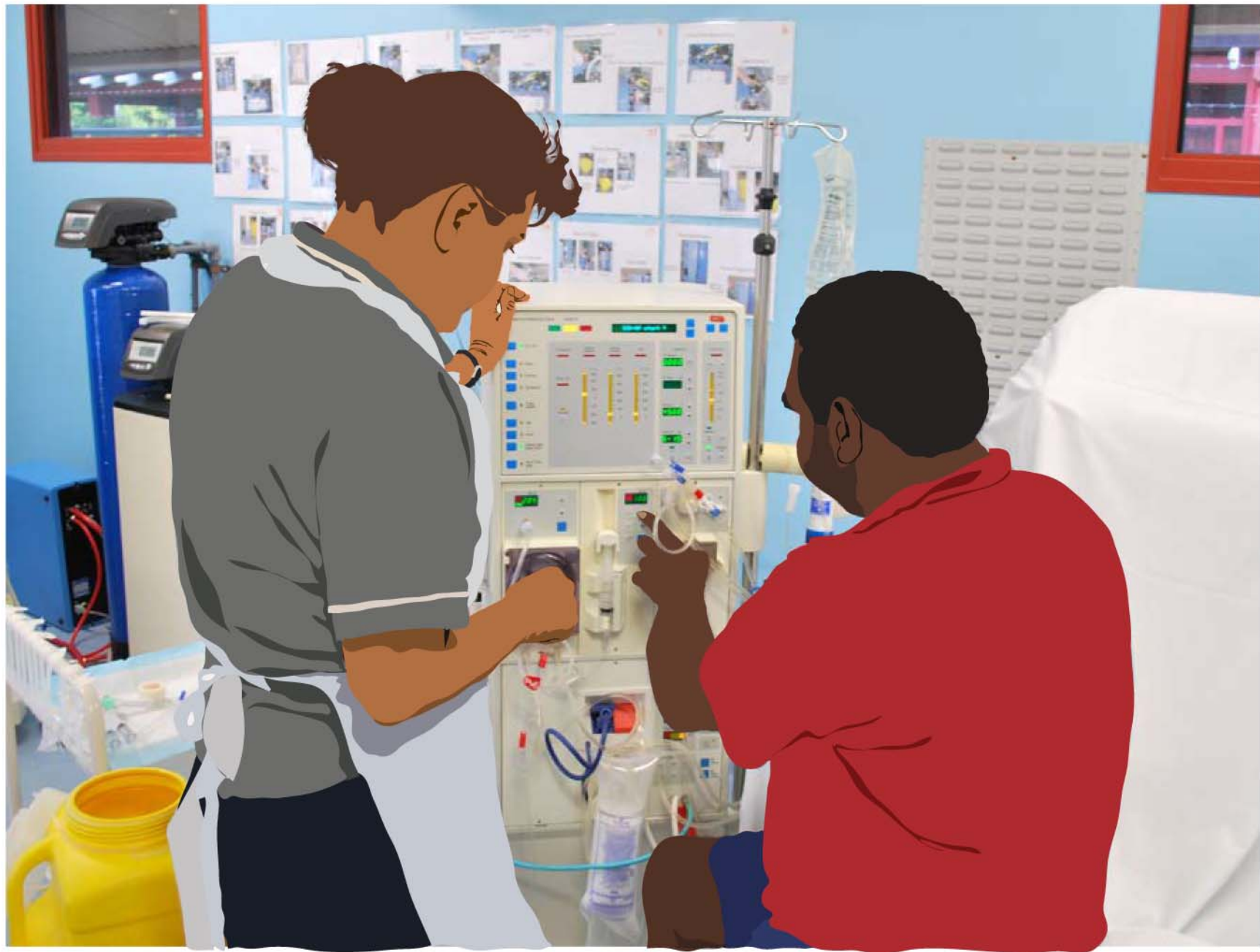
fistula



Haemodialysis through a fistula



Setting up the haemodialysis machine



Connecting to the haemodialysis machine through a fistula



Haemodialysis machine cleans your blood



Cleaning the haemodialysis machine after dialysis



Three times every week

| | | MONDAY | TUESDAY | WEDNESDAY | THURSDAY | FRIDAY | SATURDAY | SUNDAY |
|----------------|----|---|--|--|--|---|--|--------|
| morning time | 7 |  | |  | |  | | |
| | 8 | | | | | | | |
| | 9 | | | | | | | |
| | 10 | | | | | | | |
| | 11 | | | | | | | |
| afternoon time | 12 | | | | | | | |
| | 1 | |  | |  | |  | |
| | 2 | | | | | | | |
| | 3 | | | | | | | |
| | 4 | | | | | | | |
| evening time | 5 | | | | | | | |
| | 6 | | | | | | | |
| | 7 | | | | | | | |
| | 8 | | | | | | | |
| | 9 | | | | | | | |
| close | 10 | | | | | | | |

Places to do dialysis



- Hospital



- Satellite unit

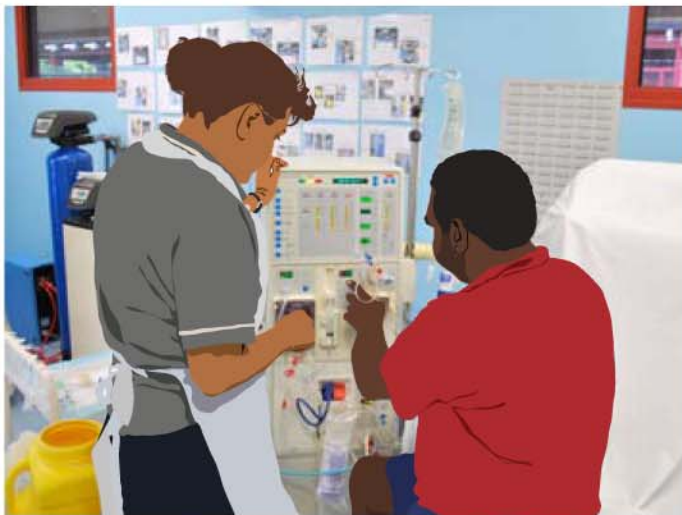


- Community clinic; Renal Ready Room





Home haemodialysis



- Training in town
- Support at home
- Renal Ready Room on community





Keep infections away, keep yourself clean, keep your place clean



Moving to town for dialysis



Finding accommodation



- Aboriginal Hostels Limited

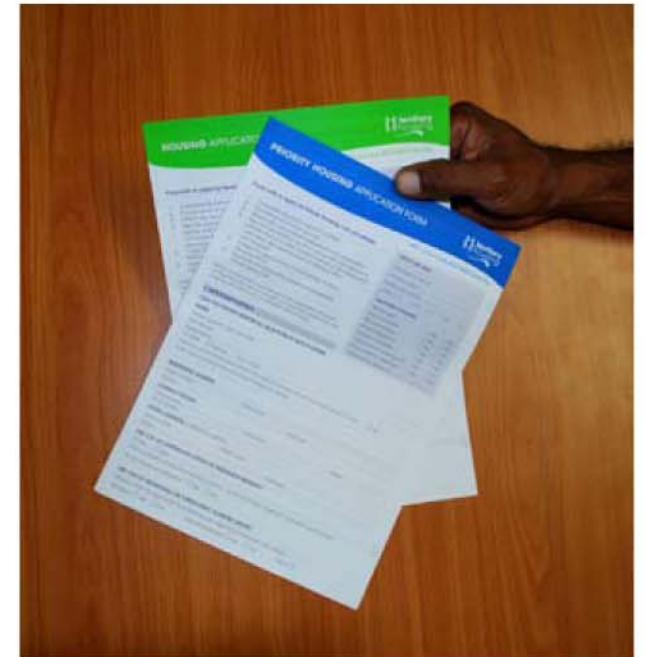


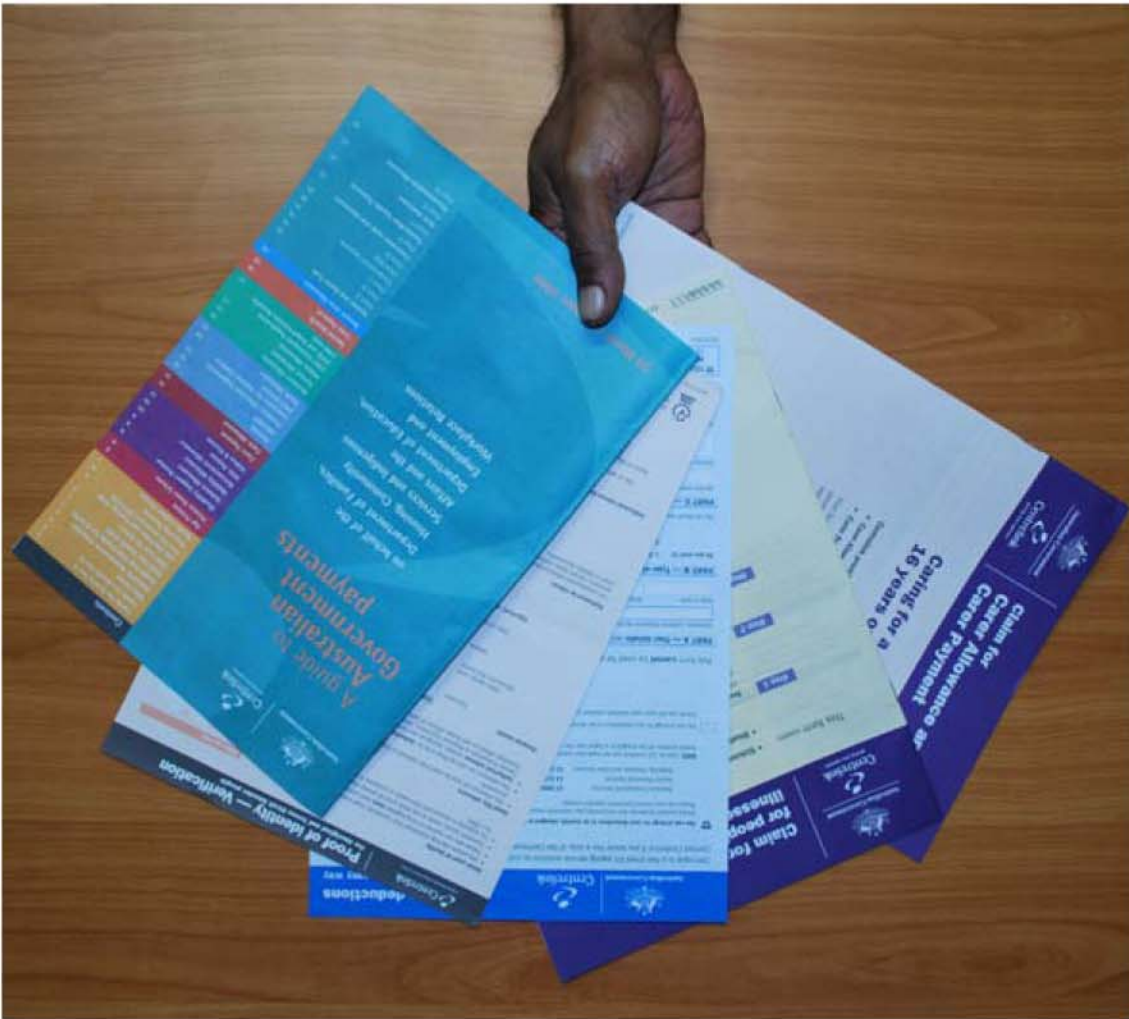
- With family



- Town Camps

- Territory Housing





Centerlink forms



Key card; medicare card; drivers licence; ID cars;
Centerlink/Health Concession card

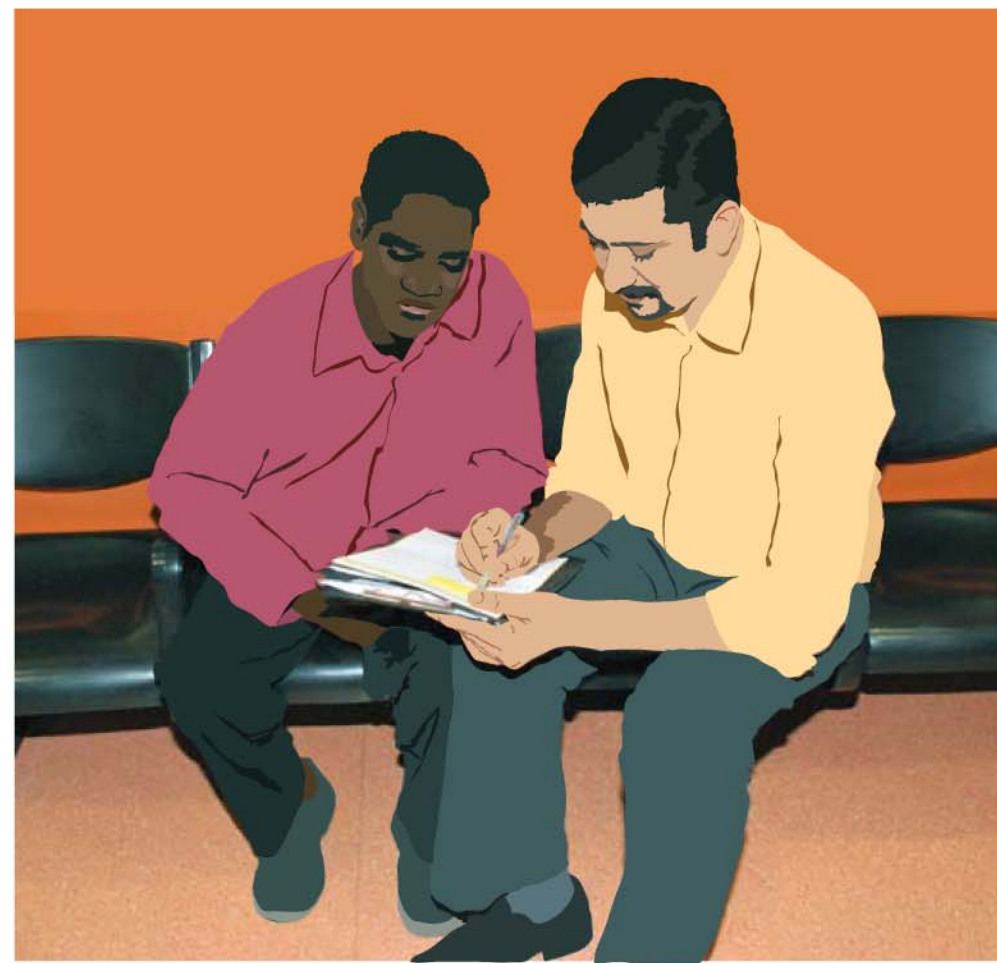
School for children / grandchildren



Visiting home; keeping in touch with relatives



There are people to help you: Social Worker, Aboriginal Liaison Officer, Aboriginal Interpreter Service





Talk with your family and health workers

Talk with doctors and nurses



Haemodialysis cleans your blood so you can live longer



Haemodialysis does not fix your kidneys

WORDS TO UNDERSTAND:

- treatment
- haemodialysis
- home haemodialysis
- haemodialysis machine
- fistula
- needles
- social worker
- aboriginal liaison officer
- satelite unit

HAEMODIALYSIS

RESOURCE TOPICS:



THE WORK OF YOUR KIDNEYS



WHEN YOUR KIDNEYS GET SICK



LIVING WITH KIDNEY DISEASE



DIET AND KIDNEY DISEASE



TREATMENT OPTIONS & PATHWAYS



PERITONEAL DIALYSIS



HAEMODIALYSIS



FISTULA AND CATHETER



PALLIATIVE CARE FOR PEOPLE WITH SICK KIDNEYS



TRANSPLANT BOOKS 1 - 4

NT Renal Services would like to thank all the renal patients and others who donated their time in posing for the photos that were used to make the illustrations in these resources.

Producer Gillian Gorham

**Project Management
Art work** Michael Roseth

Content Development NT Renal Services

Consultants Renal patients, NT Palliative Care, PEPA Program, NT Preventable Chronic Disease Program, NT Aboriginal Interpreter Services, NT Aboriginal Services Support Unit, NT Aboriginal Workforce Development, Western Desert Nganampa Walytja Palyantjaku Tjutaka, Congress, Danila Dilba Health Service, Katherine West Health Board, Jeannie Devitt

Border art work From NT Palliative Care Model
Design by Bev Derschow

Painting by Barrapuy Wanambi, Dipililnga Marika, Wayalwanga Marika, Samuel M Assan, Nina Puruntatameri, Karina Napagardi Penhall

Proudly supported by
**Northern Territory
Government**



Australian Government
Department of Health and Ageing

**Northern Territory
Renal Services**